

Fruit acids of cranberry

Sample: cranberry juice

Inj. solvent: mobile phase

Inj. volume: 10 μ L

SP: 150x4.6 Reprosil-Pur C18-AQ (3 μ m)

MP: 0.5% aq. H₃PO₄

Flow: 2 mL/min

Detection:

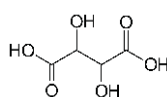
— 205 nm

— 260 nm

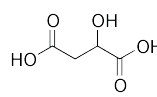
Detector cell volume: 10 μ L

Temperature: 25 $^{\circ}$ C

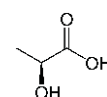
Pressure: 190 bar



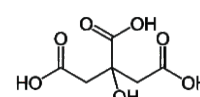
Tartaric, T



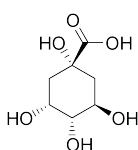
Malic, M



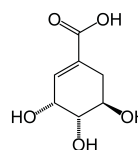
Lactic, L



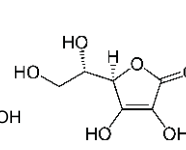
Citric, C



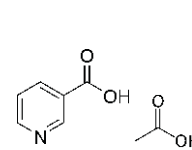
Quinic, Q



Shikimic, Sh



Ascorbic, A



Nicotinic, N Acetic, Ac

ELSICO HPLC Company



SCAN

Consulting and training for HPLC

www.hplc.ru/training



<https://sites.google.com/site/scansychev/>
<http://www.chromforum.ru/>