

Anthocyanins of blueberry and cranberry

Sample:

— blueberry juice

— cranberry juice

Inj. solvent: mobile phase

Inj. volume: 10 μ L

SP: 50x4.6 Reprosil-Pur Basic C18 (1.9 μ m)

MP: 1% aq. H₃PO₄

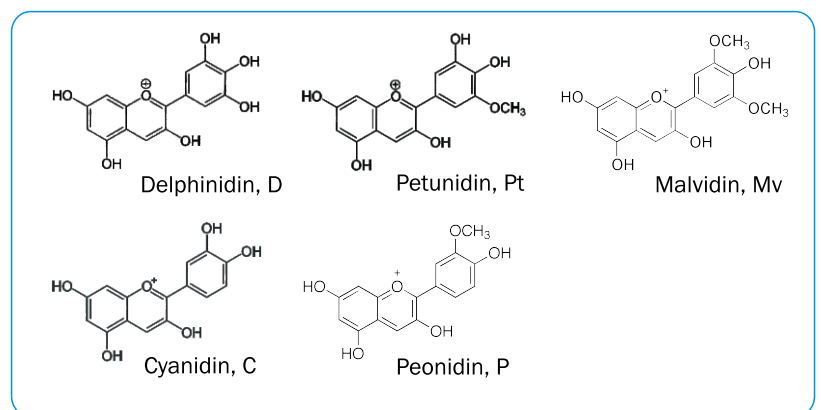
Flow: 2 mL/min

Detection: 520 nm

Detector cell volume: 10 μ L

Temperature: 25 $^{\circ}$ C

Pressure: 200 bar



ELSICO HPLC Company



SCAN

Consulting and training for HPLC

www.hplc.ru/training



<https://sites.google.com/site/scansychev/>
<http://www.chromforum.ru/>