

### Anthocyanins of blueberry

**Sample:** blueberry juice

**Inj. solvent:** mobile phase

**Inj. volume:** 10  $\mu$ L

**SP:** 150x4.6 Reprosil-Pur C18-AQ (3  $\mu$ m)

**MP:** 1% aq. H<sub>3</sub>PO<sub>4</sub>

**Flow:** 2 mL/min

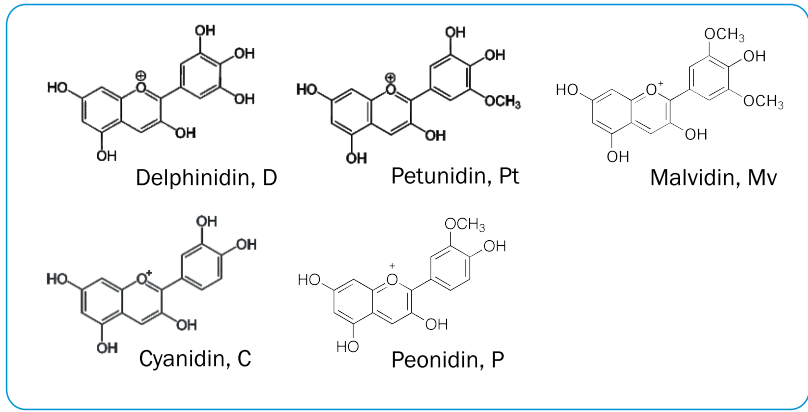
**Detection:**

— 205 nm

**Detector cell volume:** 10  $\mu$ L

**Temperature:** 25 °C

**Pressure:** 190 bar



ELSICO HPLC Company



SCAN

Consulting and training for HPLC

[www.hplc.ru/training](http://www.hplc.ru/training)



<https://sites.google.com/site/scansychev/>  
<http://www.chromforum.ru/>