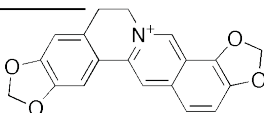
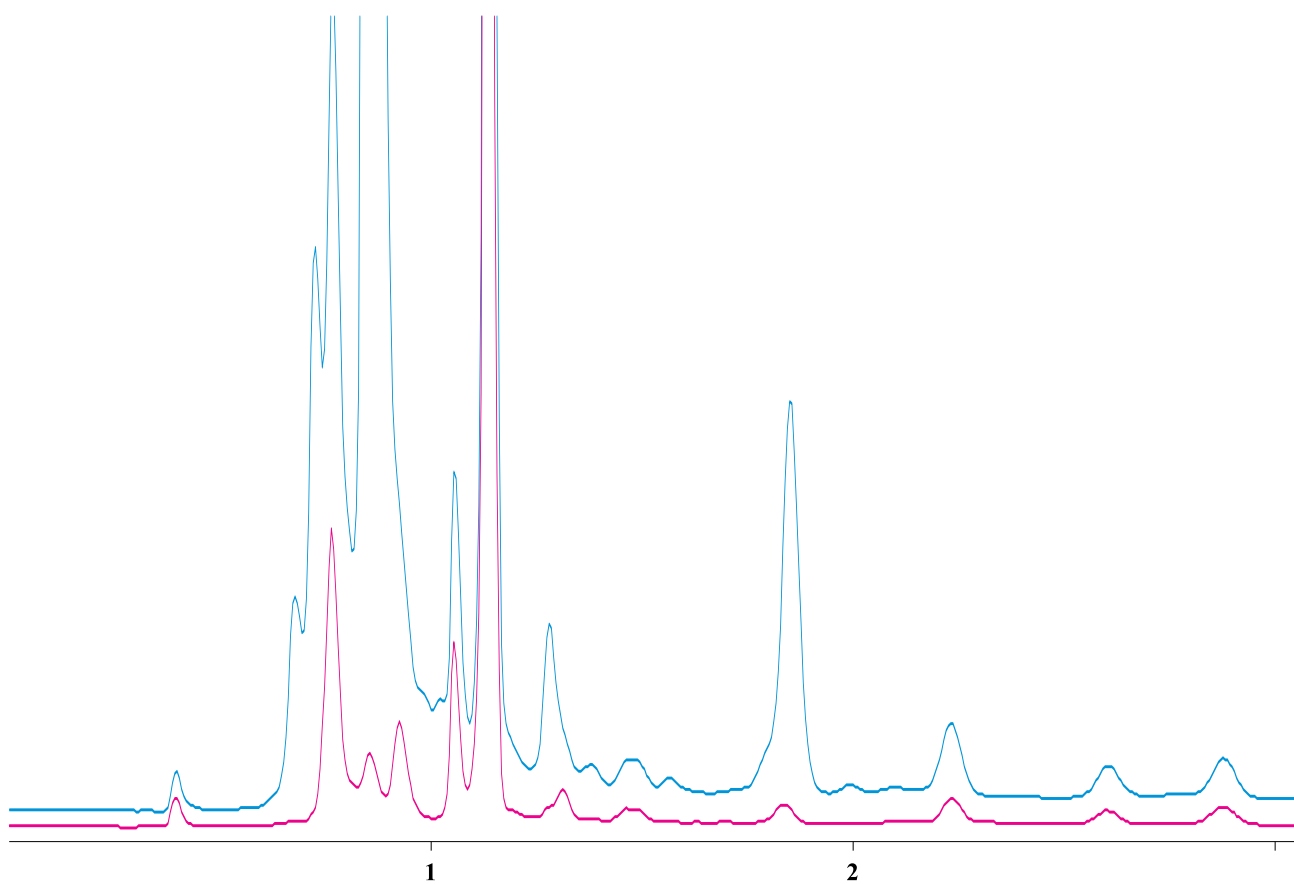
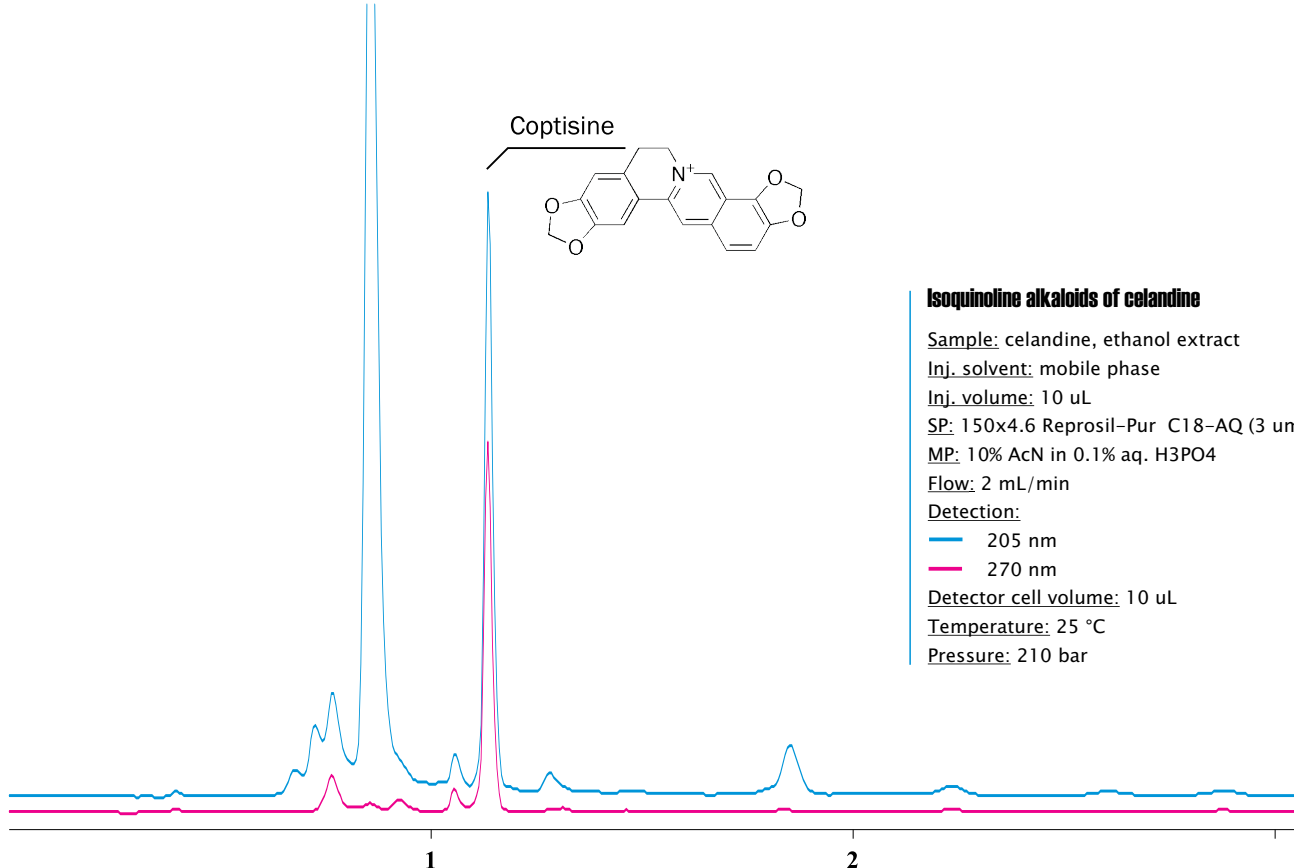


Coptisine



Isoquinoline alkaloids of celandine

Sample: celandine, ethanol extract
Inj. solvent: mobile phase
Inj. volume: 10 uL
SP: 150x4.6 Reprisil-Pur C18-AQ (3 um)
MP: 10% AcN in 0.1% aq. H3PO4
Flow: 2 mL/min
Detection:
— 205 nm
— 270 nm
Detector cell volume: 10 uL
Temperature: 25 °C
Pressure: 210 bar



ELSICO HPLC Company



SCAN

Consulting and training for HPLC

www.hplc.ru/training



<https://sites.google.com/site/scansychev/>
<http://www.chromforum.ru/>