

Hydroxycinnamic acids of echinacea

Sample: echinacea, ethanol extract

Inj. solvent: mobile phase

Inj. volume: 10 μ L

SP: 50x4.6 Reprosil-Pur Basic C18 (1.9 μ m)

MP: 17% AcN in 0.5% aq. H₃PO₄

Flow: 2 mL/min

Detection:

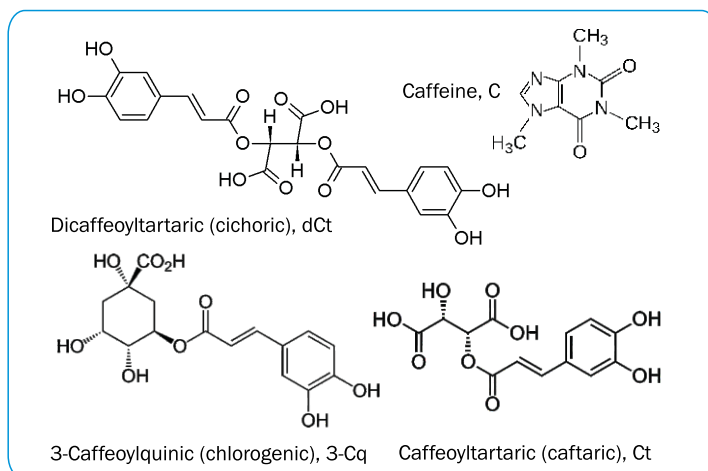
— 270 nm

— 330 nm

Detector cell volume: 10 μ L

Temperature: 25 °C

Pressure: 200 bar



ELSICO HPLC Company



Consulting and training for HPLC

www.hplc.ru/training

<https://sites.google.com/site/scansychev/>

<http://www.chromforum.ru/>