

Catechins of green tea

Sample: green tea (SenCha), ethanol extract

Inj. solvent: mobile phase

Inj. volume: 10 μ L

SP: 250x4.6 Reprosil-Pur Basic C18 (5 μ m)

MP: 17% AcN in 0.5% aq. H₃PO₄

Flow: 2 mL/min

Detection:

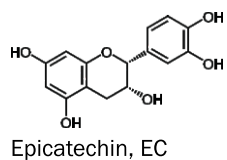
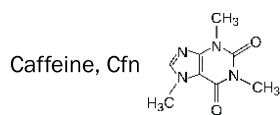
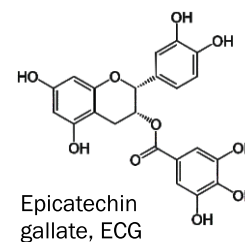
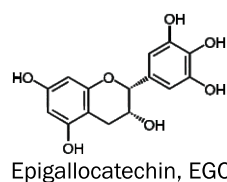
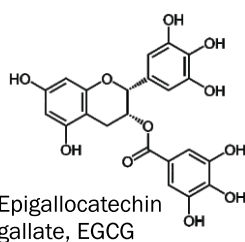
— 205 nm

— 270 nm

Detector cell volume: 10 μ L

Temperature: 25 $^{\circ}$ C

Pressure: 130 bar



ELSICO HPLC Company



SCAN

Consulting and training for HPLC

www.hplc.ru/training



<https://sites.google.com/site/scansychev/>
<http://www.chromforum.ru/>