

Water soluble vitamins

Sample: vitamin containing medicine, sample 2

Inj. solvent: mobile phase

Inj. volume: 10 μ L

SP: 150x4.6 Reprosil-Pur C18-AQ (3 μ m)

MP: 50mM KH_2PO_4 in 0.1% aq. H_3PO_4

Flow: 2 mL/min

Detection:

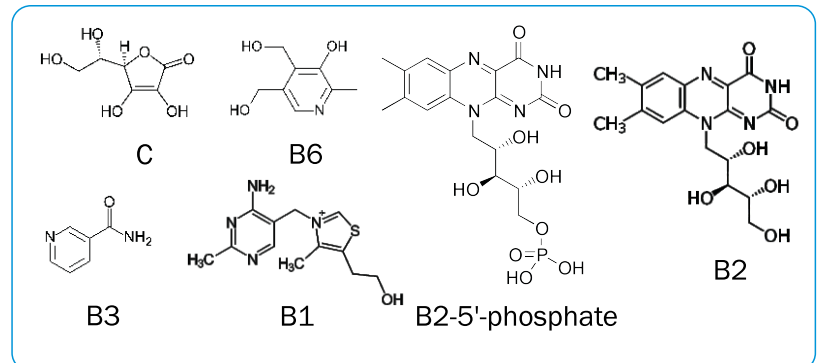
— 205 nm

— 260 nm

Detector cell volume: 10 μ L

Temperature: 25 $^\circ\text{C}$

Pressure: 200 bar



ELSICO HPLC Company



SCAN

Consulting and
training for HPLC

www.hplc.ru/training



<https://sites.google.com/site/scansychev/>
<http://www.chromforum.ru/>