

Water soluble vitamins

Sample: brewer's yeast, water extract

Inj. solvent: mobile phase

Inj. volume: 10 µL

SP: 150x4.6 Reprosil-Pur C18-AQ (3 µm)

MP: 7.5% AcN and 10mM pentasufonate in 0.1% aq. H3PO4

Flow: 2 mL/min

Detection:

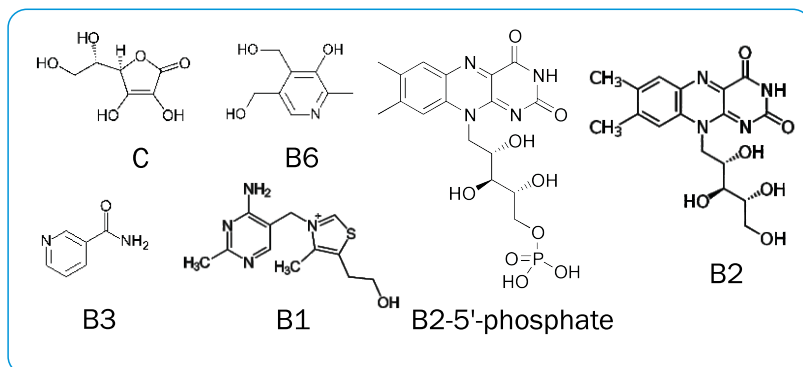
— 2475 nm

— 265 nm

Detector cell volume: 10 µL

Temperature: 25 °C

Pressure: 190 bar



ELSICO HPLC Company



SCAN

Consulting and training for HPLC

www.hplc.ru/training



<https://sites.google.com/site/scansychev/>
<http://www.chromforum.ru/>