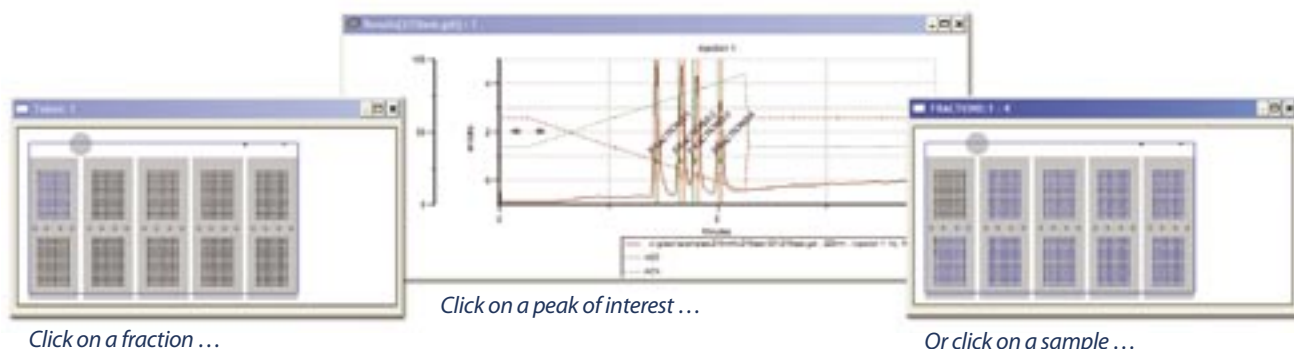
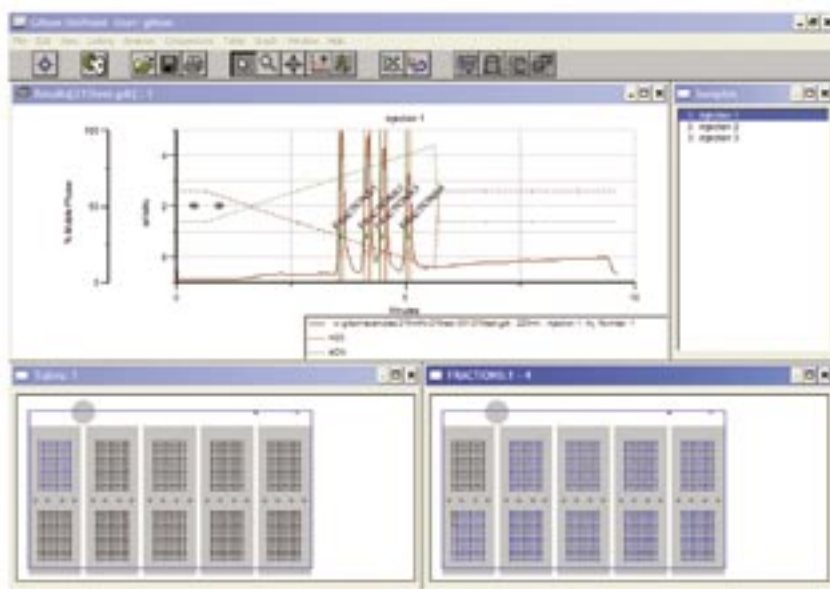


# UniPoint™ System Software



## UniPoint's graphical tracking offers several time-saving features:

- Powerful sample tracking
- View a single peak of the plot
- Overlay traces by simply pointing and clicking
- Sample description files are easily imported from and exported to external spreadsheets for fast, accurate file exchange



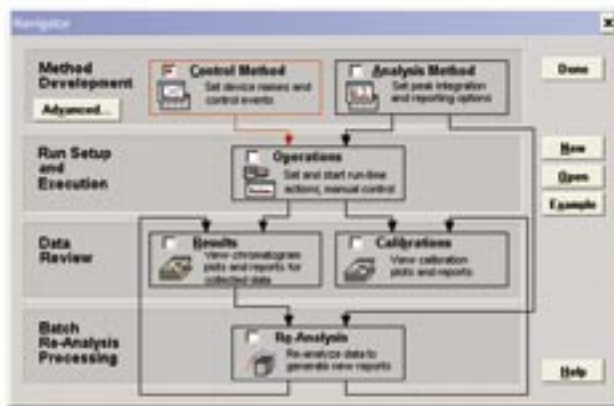
*In just seconds, all of the corresponding information is conveniently displayed on a single screen.*

## True multi-tasking capabilities:

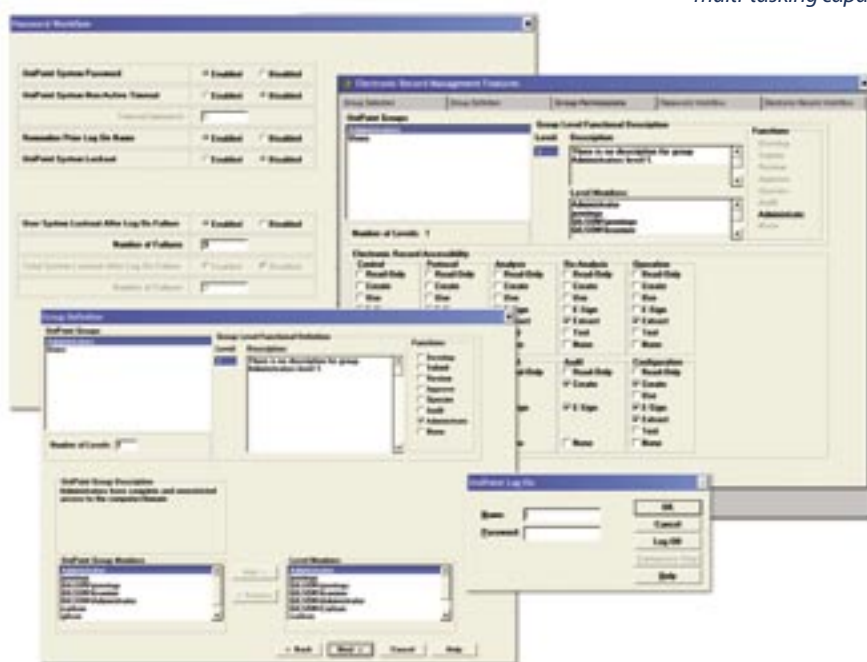
- Control multiple systems simultaneously from a single computer
- Edit UniPoint software methods or re-analyze your data during a chromatography run
- Utilize other software while controlling your HPLC system
- Liquid handling capabilities for reformatting, diluting, etc.
- Versatile and flexible injection techniques
- Automated re-injection of collected fractions directly from the fraction sites with no manual intervention
- The interactive screen allows you to click on a fraction tube/well, peak, or sample location; the screen automatically updates corresponding windows
- Control of peripheral devices via RS-232 control

# UniPoint™ System Software

- Injection and fraction collection on one hardware platform
- Re-inject collected fractions into analytical system for purity check and estimate concentration
- Use multiple variables to customize operations and methods
- Easily add switching valves for multiple columns and multiple mobile phases
- 2-D chromatography capability
- Preparative injection and collection to 200 mL/min. with an unlimited collection volume
- Multiple detector signals with a single run



UniPoint offers single point control of all components and multi-tasking capabilities.



- Fully validated
- Electronic Records Management features help ensure GMP, GLP, and 21 CFR Part 11 compliance
- Electronic workflow capabilities
- Electronic signatures
- Security integrated with Microsoft® Windows®-based security
- Automatic versioning of records

## Computer Requirements

- Intel® Pentium® 4 processor (2.0 GHz)
- 512 MB RAM, 80 GB hard drive (150 MB free space)
- CD-ROM drive
- Serial ports (2)
- Microsoft® Windows® 2000 SP3 or XP Professional SP1



UniPoint System Software controls Gilson's Chromatography Systems for purification and analysis of combinatorial libraries.

Gilson, Inc. World Headquarters  
3000 W. Beltline Hwy.  
P.O. Box 620027  
Middleton, WI 53562-0027 USA  
Telephone: 800-445-7661 or 608-836-1551  
Fax: 608-831-4451

Gilson S.A.S.  
19, avenue des Entrepreneurs  
BP 145  
F-95400 VILLIERS LE BEL France

[www.gilson.com](http://www.gilson.com)  
[sales@gilson.com](mailto:sales@gilson.com), [service@gilson.com](mailto:service@gilson.com), [training@gilson.com](mailto:training@gilson.com)

